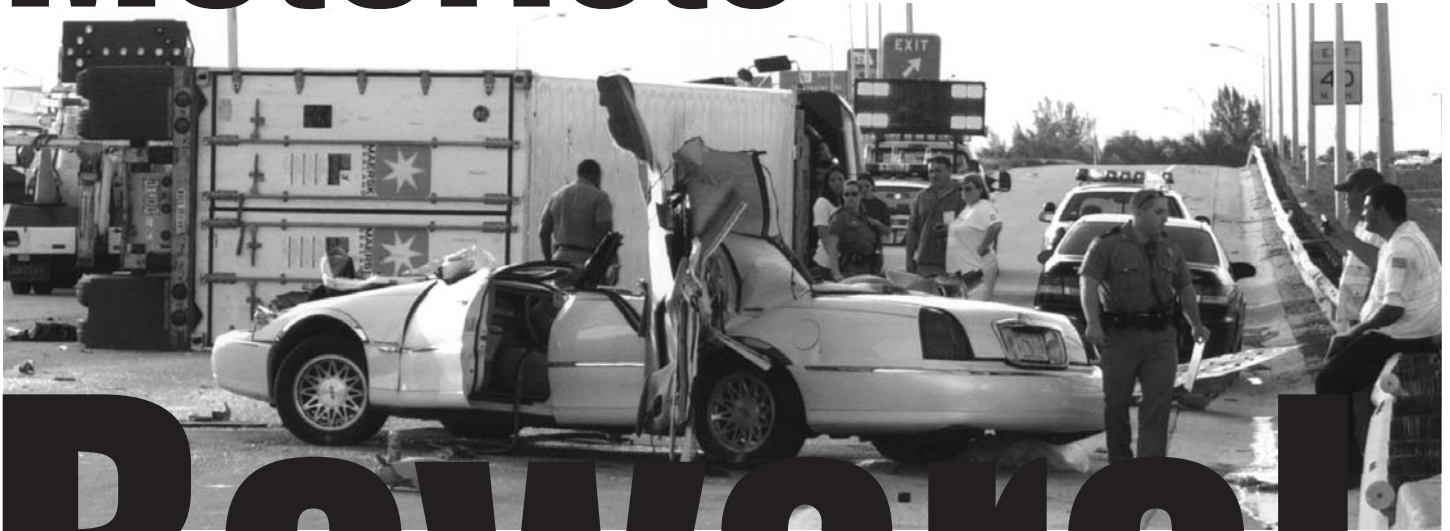


Motorists



Beware!

Did you know that truck drivers leaving America's ports are forced to haul tens of thousands of overweight containers every year?

Overweight loads have a hard time making quick maneuvers. They have a high number of tire blowouts and a high risk of overturning. Their brakes are overworked and more likely to fail.

The Department of Transportation has been aware of this problem for years. When will the US Congress pass a law forbidding foreign owned steamship lines like Maersk Sealand from bringing overweight containers into America's ports and onto our roads and highways?

Its time to end this Madness!



We urge you to avoid driving next to or behind large container trucks.

Teamsters Port Division

25 Louisiana Avenue, NW
Washington, DC 20001