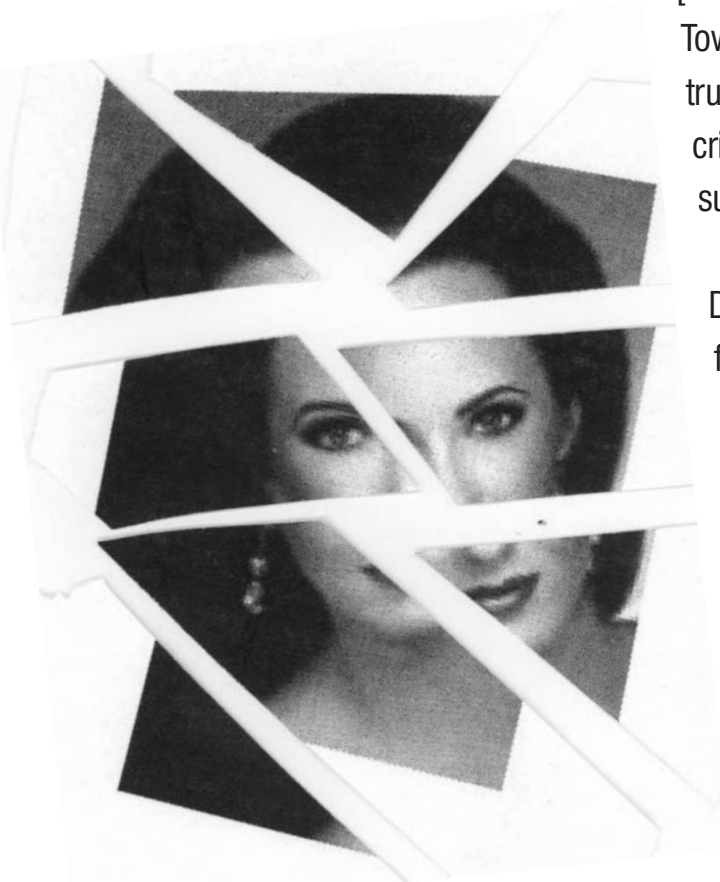


A Tragic Crash... Who Do You Blame?

Miss Florida Shauna Pender was on her way to a charity event when a [Maersk container] truck overturned on top of the Lincoln Town Car she was riding in. Metal impaled her chest. The truck crushed her right arm and shoulder. She woke up in critical condition asking "Am I going to die?" She had six surgeries in six weeks*



Did you know that truck drivers leaving Americas ports are forced to haul tens of thousands of overweight containers every year? Overweight loads have a hard time making quick maneuvers. They have a high number of tire blowouts and a high risk of overturning. Their brakes are overworked and are more likely to fail.

The foreign owned steamship lines like Maersk Sealand make billions of dollars ...and make America's roads and highways dangerous for American motorists.

It's time for US Congress to tell Maersk and the other steamship lines to keep overweight containers off our roads.

*Times Floridian January 31, 2004



**We urge you to avoid driving next to
or behind large container trucks.**